



# Presentation

R. Circular Norte, NERE Sala 12.10 7005-841 Évora, PORTUGAL  
info@agroinsider.com | www.agroinsider.com

# The Challenge



Modern agriculture must increasingly accomplish:

- ✓ **competing in international markets**
- ✓ **input management efficiency**
- ✓ **value criation to the end user**

Thus arises Aggroinsider®, with an experienced and skilled team, focused on giving farmers the tools for a more efficient and sustainable management of their activity.

# Agroinsider® – The company



**AgroInsider ([www.agroinsider.com](http://www.agroinsider.com)) was founded in 2015, to provide Agriculture 4.0 services throughout the agro-industrial value chain. Since then, has been awarded a EU-H2020 “Seal of Excellence” and a EUREKA Artificial Intelligence seal.**



# Agroinsider® – The company



## Mission

**To produce intensive knowledge based on Earth Observation data that is socially relevant to decision making.**

Improve the financial efficiency and environmental sustainability of agricultural activities in Portugal and worldwide.



## Vision

**Every day make the world a better place**

To be at the forefront of technical and scientific knowledge, as well as international market trends, to support decision-making and contribute to a more sustainable agriculture in economic, social, and environmental aspects.



# Agroinsider® – The company



We support decision making at different levels:



Implementation of the goals of the European Green Deal and Farm to Fork strategies.



Monitoring, inspection and auditing of agricultural parcels, in order to reduce their operational risks.



Optimization of Soil - Water - Plant processes, as a way of reducing the respective operational footprints.



Spectral, spatial and temporal analysis of (bio)diversity and sustainability of Agroforestry landscapes.



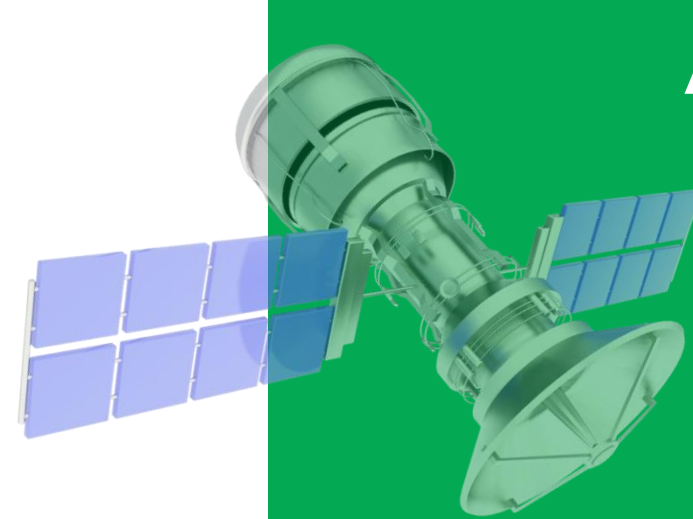
Estimation of biomass stocks, production and carbon inventories, using earth observation tools.

# Our technology - Data

We work with a set of satellites managed by the European Space Agency that capture high resolution images, collecting data on vegetation, soils and moisture.

Agroinsider® transforms this data into relevant information to help in decision making and makes it available in its SmartAG App.

Through Artificial Intelligence techniques, we prepare alert reports (anomalies) and campaign reports of the plot or crop.



AGROINSIDER®



# Our technology - Alerts



## Irrigation systems

We optimize your water use and detect possible problems in the irrigation system.



## Productivity deviation

Real-time monitoring of the vegetative development of your crop.



## Anomalies

According to our algorithms, yellow or red alerts are generated according to the variability of the plot.





# Our Services



## Audit

We analyse the activities carried out on your farm, quantify and issue a certificate with your environmental footprint, attributing monetary value to be commercialized.



## Consultancy

We manage and ensure the best quality of the entire cultivation process. We advise best management practices.

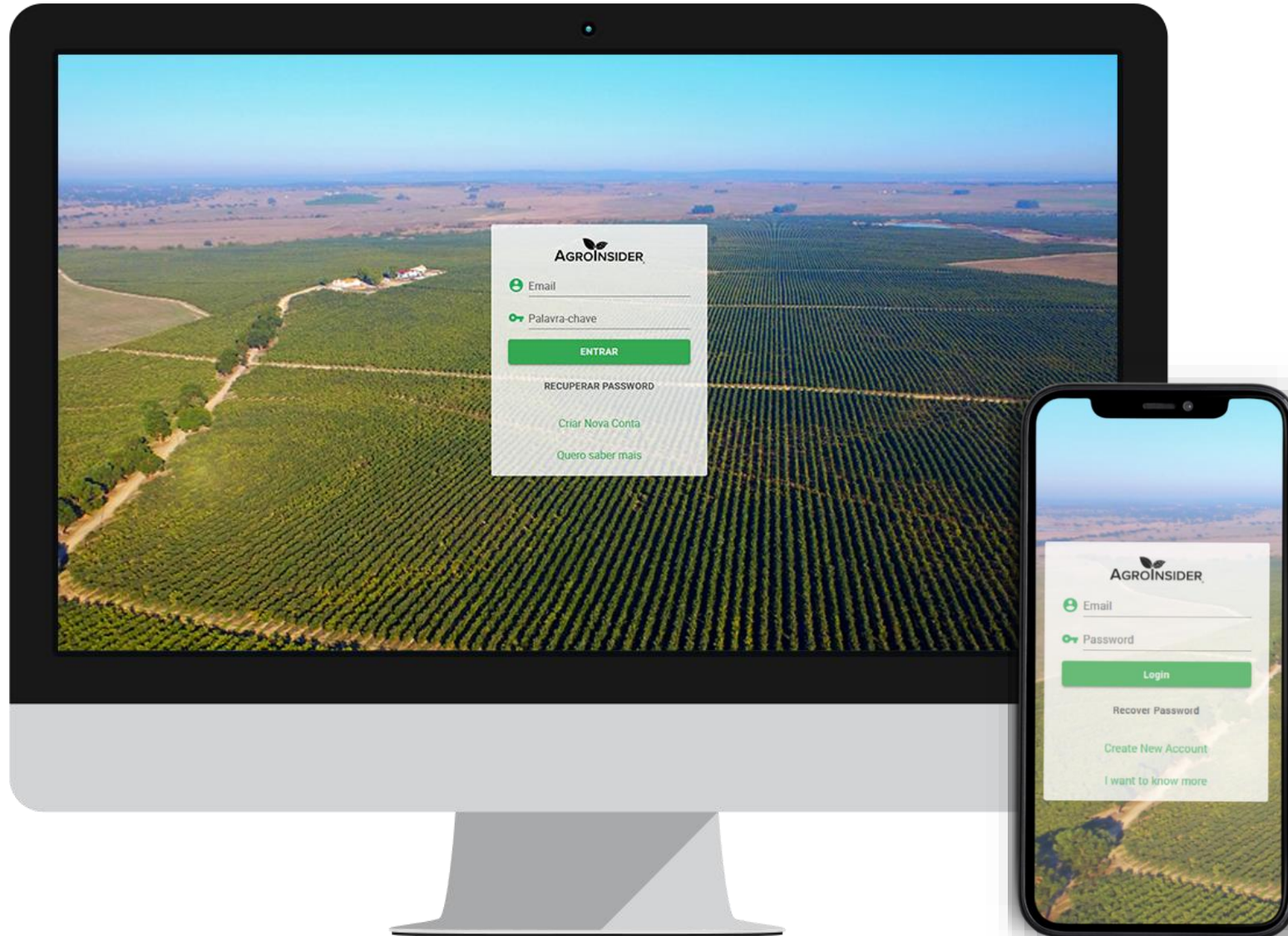


## Broker

We help you buy and sell your carbon credits on the international market.

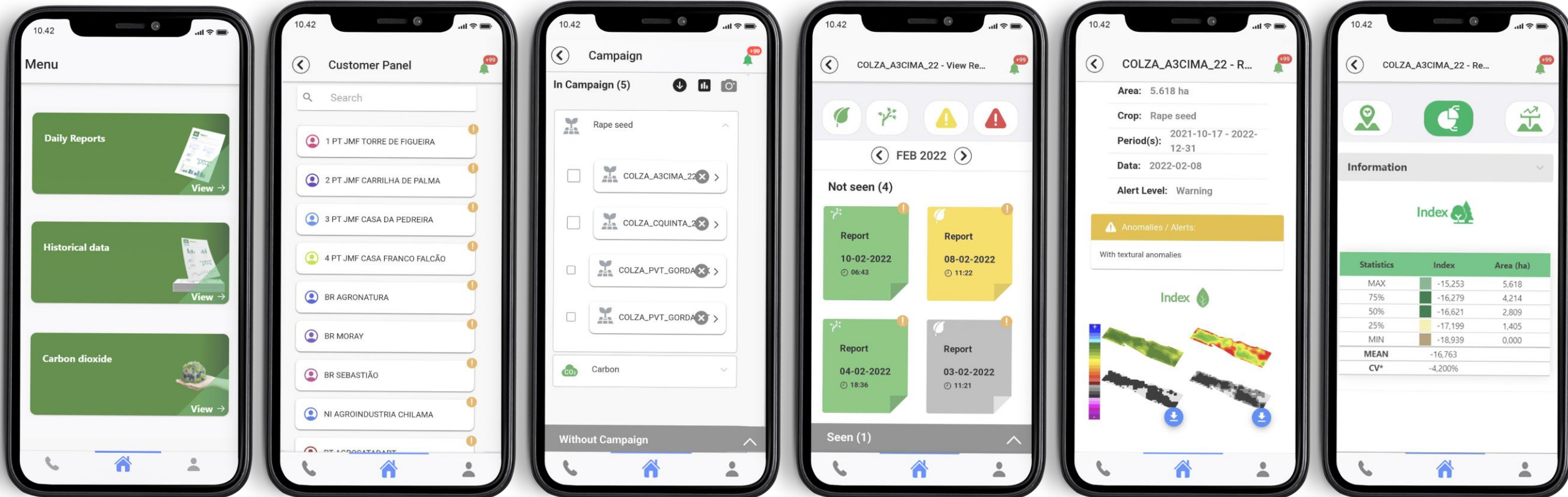


# Risk Monitor- SmartAG



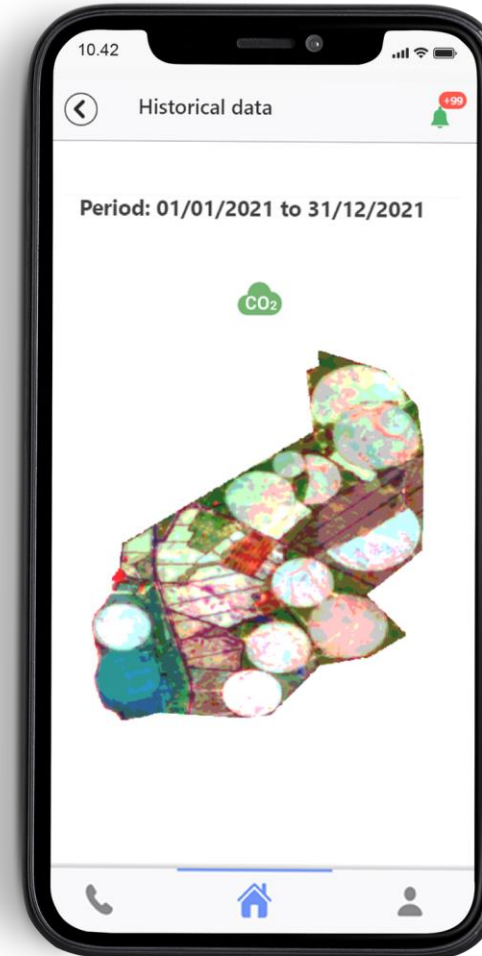
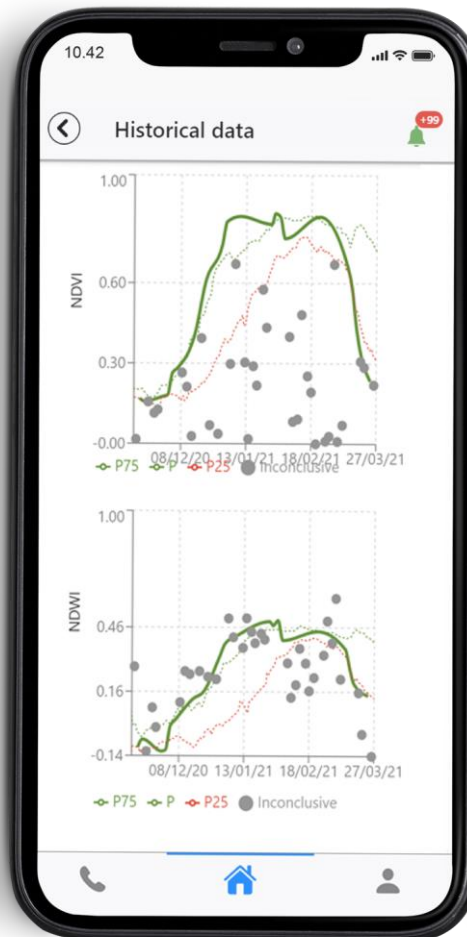
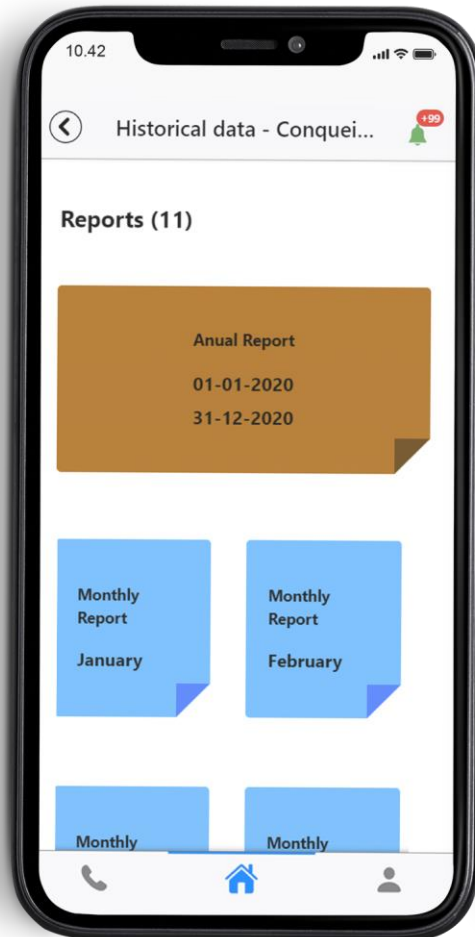
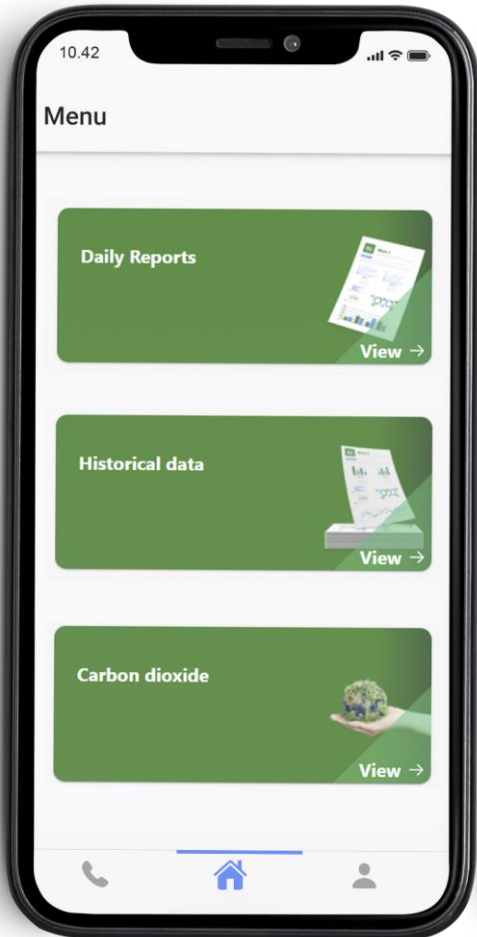
# AI Evaluate

## Plot limits – Crop daily evolution



# AI Evaluate

Farm Limits – Land use analysis in time and space

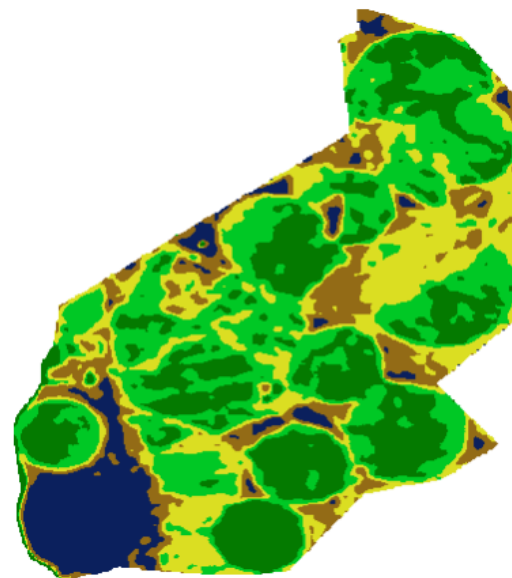
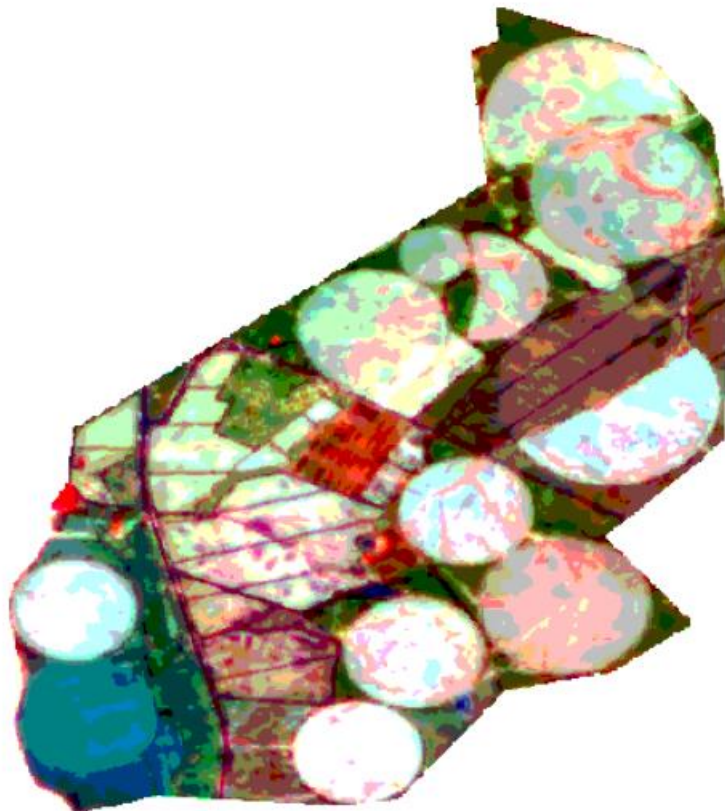


# AI Evaluate

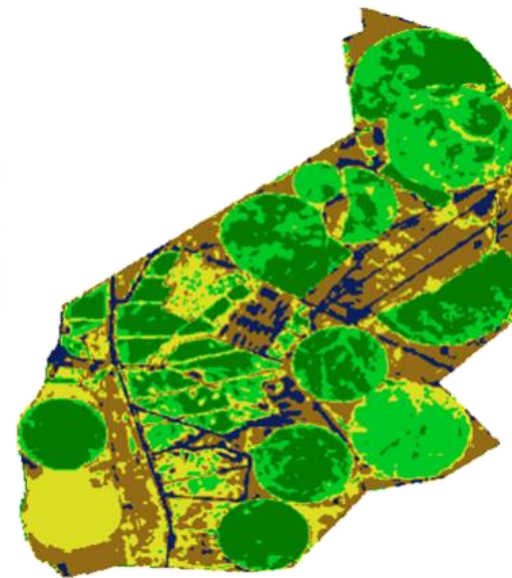
CO2 territorial intelligence

Farm Annual Analysis - 2021

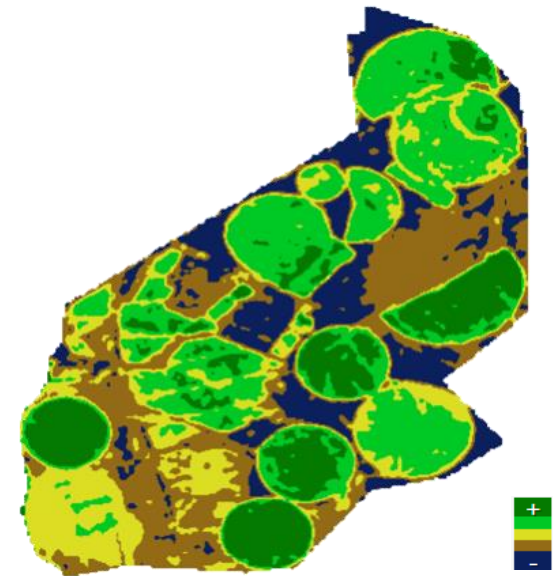
- High structure and productivity and low water stress
- Lower water stress
- High productivity (more chlorophyll)
- More structure (or slope)
- Mobilized areas or pastures



Vegetation structure



Photosynthetic activity



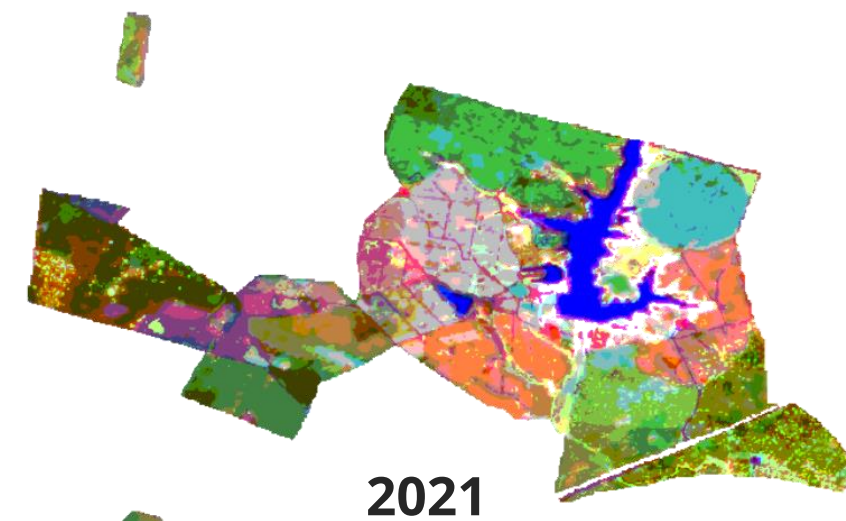
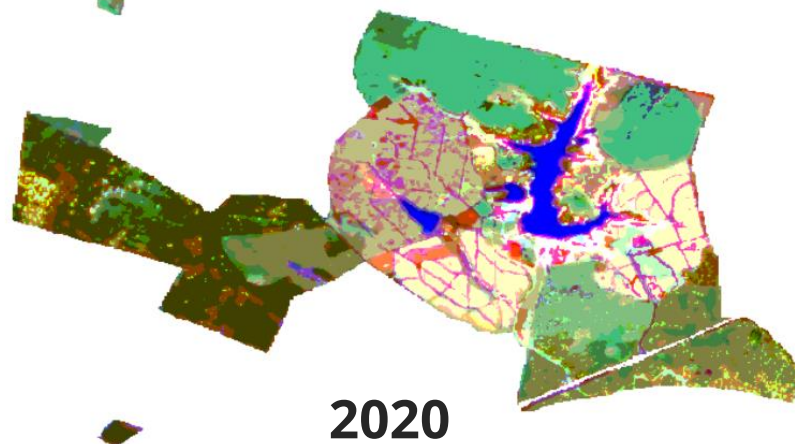
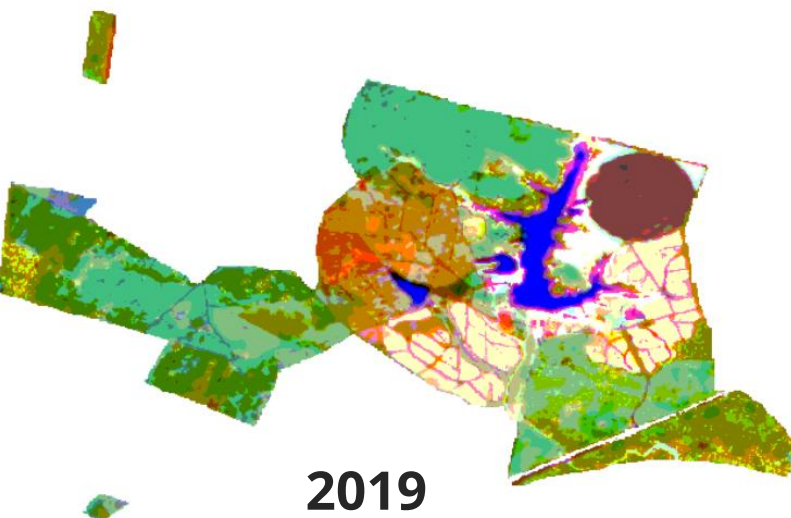
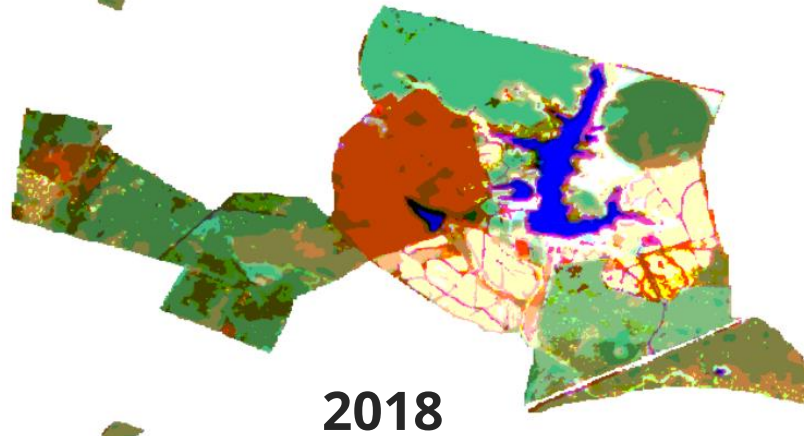
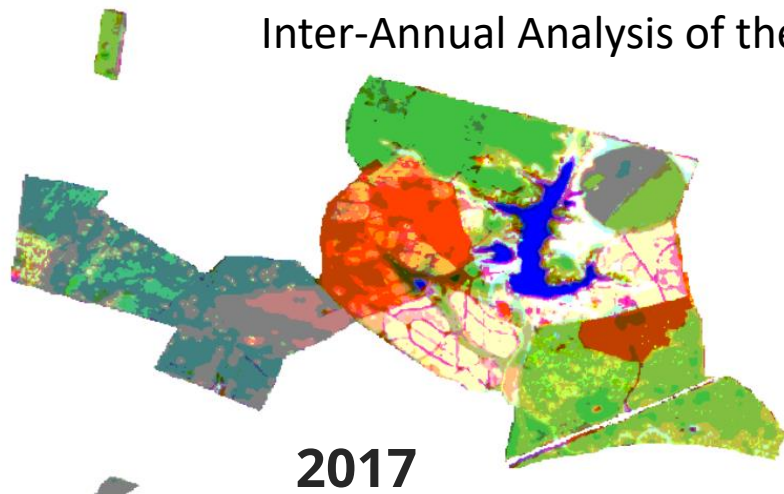
Vegetation water stress



# AI Evaluate

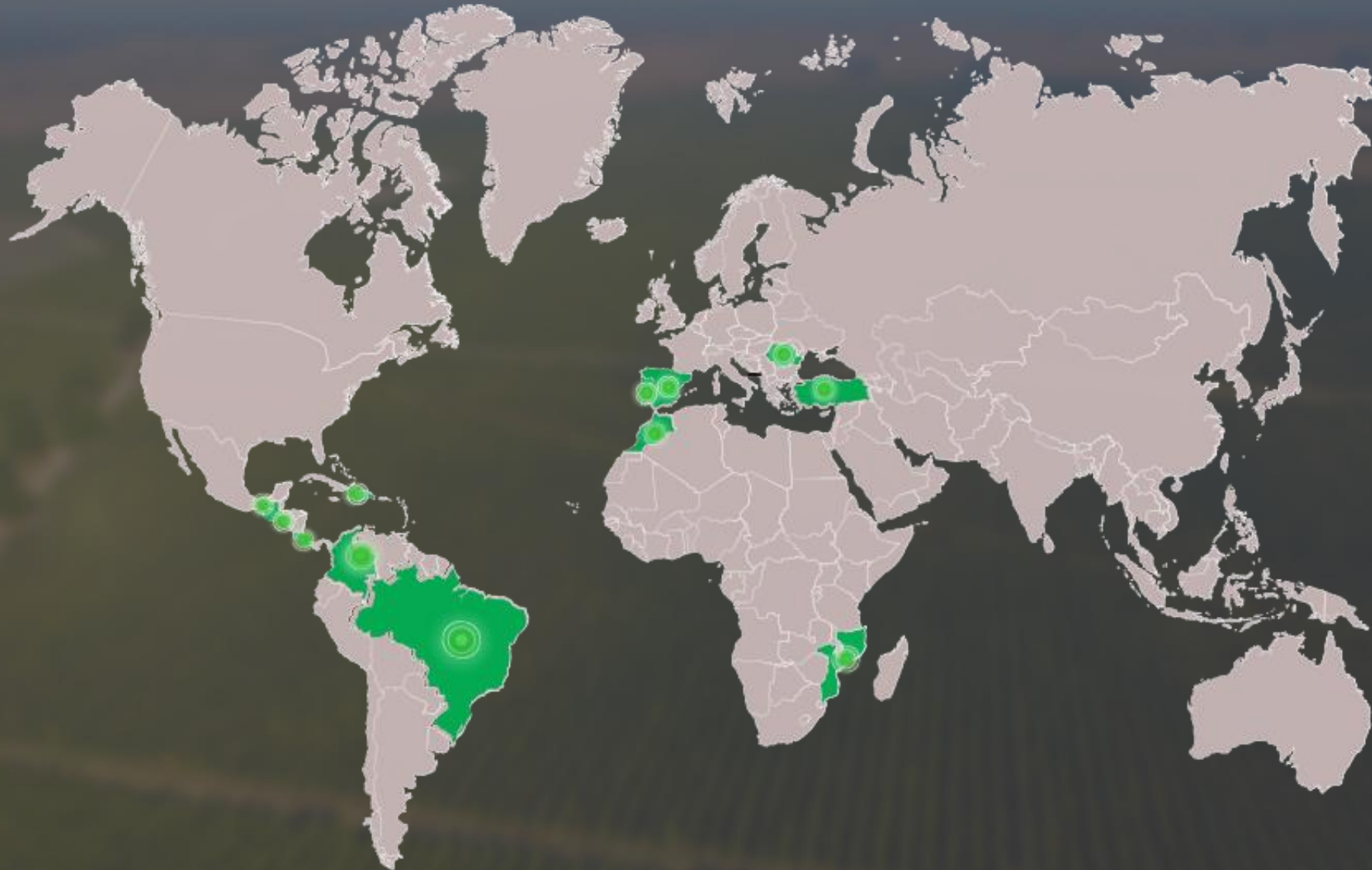
## Inter-Annual Farm Analysis: 2017 - 2021

Inter-Annual Analysis of the Farm



- High structure and productivity and low water stress
- Lower water stress
- High productivity (more chlorophyll)
- More structure (or slope)
- Mobilized areas or pastures

# Agroinsider® in the World



# Agroinsider® in the World



José Rafael Silva

PhD, partner, CTO, co-CEO Agroinsider



Mário Luís

Partner, CFO, co-CEO Agroinsider



Sebastião Romeu

Agronomic Eng.  
Agroinsider Diretor  
Brazil



Marcos Cortes

Management  
Agroinsider Diretor  
Latin American & Caribe



Patrícia Lourenço

PhD, Biology & Remote  
Sensing  
Inovation Director



Vanessa Duarte

PhD, Eng., Agronomic,  
Project manager



Francisco Marques

Agronomic Eng.,  
Remote sensing



Luís Paixão

Eng., GIS, Remote  
Sensing



Maria Carvalho

Agronomic Eng.



António Saldanha

Agronomic Eng. &  
Management



Camila Fernandez

Business manager



Filipa Santos

Design & Communication



Filipe Vieira

TI, back-end development



Carlos Palma

TI, back-end development



Mariano Terrón

TI, back-end development



Pedro Mendes

TI, front-end development



Luís Encarnação

TI, front-end development

# How to reach us

---

## Where we are

PORTUGAL | CENTRAL AMERICA | BRAZIL



[info@agroinsider.com](mailto:info@agroinsider.com)



[www.agroinsider.com](http://www.agroinsider.com)

